

Information Matters

Martin and Associates

May 2012

www.martinandassoc.com

Volume 20, Issue 2

Search Sage 100 (fka MAS 90/200) like Google with GetX

GetX accelerates the retrieval of both basic and advanced data in Sage 100 ERP (MAS 90 and 200). It completely re-oriens the user's interaction with Sage 100 and puts them in control. You might compare it to when search engines were introduced for the internet, but this time it is exclusively for Sage 100 ERP users.

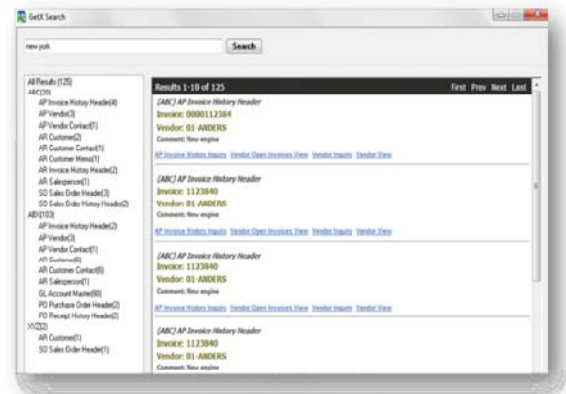
GetX is about providing your customer an order status immediately. GetX is about figuring out where you applied a check number without spending a lot of time looking for it, or finding a dollar amount when you can't remember what General Ledger account you posted it to. GetX is about moving on to help the next person while others are still looking. GetX is about heading home for the weekend on time.

By helping you to locate "X", GetX is designed to be a timesaver for every single Sage 100 user from novice to power user. It helps you find things you otherwise might not find, provides new flexibility for how you start new sales and purchase orders, and ultimately will reduce training costs due to the fact that GetX does not require mastery of Sage 100 navigation in order to obtain key data from the system.

Here are some of the features you will enjoy with GetX

- Rapid search results presented in Google-like fashion, categorized by Company and Database location. For instance a caller may ask about the status of their Purchase Order # "B1962", GetX will display only results with "B1962" in the database. It's that simple.
- Find data across companies and across modules from a single search.
- Finds data in difficult, if not impossible to search, fields like Extended Inventory Item Descriptions, Memos, and Comments in order detail lines.
- Search UDF fields.

- Allows you to start a customer order by keying in a phone number or street address, or other unique information you may have in Sage 100, then clicking on the "New Order" button.



GetX is designed to preserve the security and integrity of your Sage 100 installation while providing you ultimate flexibility in its setup and how it works for you.

- Security Events have been built into standard Sage 100 role maintenance to limit access to sensitive data.
- GetX Setup Wizard allows you to determine which Sage 100 companies, files, and fields are searched.
- GetX Windows Service is installed with the system and allows you to determine the frequency to refresh the indexed database to provide you with the most recent data possible.
- Only Sage 100 modules in the 4x Business Objects Interface (BOI) are searchable. Unfortunately, this excludes Payroll, Job Cost, Work Order, Time Card and MRP.

And the best news of all - while the others are frantically searching for information, you've already found yours, and you're moving on to satisfy the next person.

For more information about GetX, please contact your Martin & Associates Account Rep today!

Microsoft Dynamics CRM Subscription Pricing

With Microsoft Dynamics CRM Online, organizations benefit from the same capabilities as the on-premise version, minus the lengthy deployments and time-consuming maintenance. Microsoft Dynamics CRM is designed to help organizations achieve their business objectives both locally and on a global scale.



This online service is \$44 per user per month. The subscription includes 200 workflows, 300 Custom Entities and 5 GB of storage data shared by all users within your company. The monthly subscription also includes,

- Unlimited application troubleshooting
- Patch installs
- Version upgrades
- Data migration tools
- Proactive Response to Alerts
- Port and Network Device Monitoring
- Proactive Hardware Failure Monitoring
- System Software Monitoring
- Application Server Monitoring
- Database Monitoring
- Backup and Recovery
- Security
- Service Level Agreement
- Professional Support Plan

To learn more about Microsoft Dynamics CRM Online and to see if it is a good fit for your company, contact your Martin & Associates' account representative today.

Summer Lunch & Learn

June 15, 2012
Martin & Assoc.
Cincinnati, OH

For more information or to register, please email seminar@martinandassoc.com

Sage Web Seminars

Martin and Associates would like to invite you to attend one of the free Sage online seminars. Check the schedule below and sign up now. To sign up, for a Sage Webcast please visit www.sagesoftware.com/training then click on the webcast link.

Dates:

- | | |
|---------|---|
| May 8 | Sage SalesLogix - Sales, Marketing4:00 PM EST and Customer Service |
| May 9 | Sage BusinessWorks 2012: Come See.....1:00 PM EST What's in Store for You! |
| May 15 | What's New in Sage ERP MAS 901:00 PM EST and 200 Version 4.5? |
| May 17 | Building Your Business with Sage CRM..2:00 PM EST |
| June 14 | Increase Profits and Efficiency with1:00 PM EST Accounting Integrated Point of Sales Technology |



Services

- E-Business
- Financial Analysis
- System Needs Analysis
- Software Sales
- Software Installation
- Software Implementation
- Software Design and Development
- Training and Support
- Custom Programming
- Hardware Installation and Support
- Web Management/ISP Services



Sage 100 Subscription Pricing

Sage 100 ERP (fka MAS 90/200) is now offered as an on-premise subscription based service. Pricing is per user per month. This is a great option to get started on Sage 100 without having to pay software licenses fees upfront. This new pricing model is available to new customers as well as existing Sage 100 customers.

Below is the pricing for Sage 100 on-premise subscription pricing. Sage 100 is also offered in the cloud for an additional cost.

To learn more or to find out if this option is right for you, please contact your Martin & Associates account representative

Sage 100 ERP Subscription	Monthly Fee (includes Sage Business Care Gold Plan)	
	Financials Bundle (per concurrent ERP user)	Distribution Bundle (per concurrent ERP user)
Sage 100 ERP (choice of Standard, Advanced or Premium edition)		
1-5 Total Users	\$65	\$99
6-10 Total Users	\$62	\$94
11-25 Total Users	\$59	\$89
Over 25 Total Users	\$52	\$79
Includes:		
Accounts Payable	included	included
Accounts Receivable	included	included
Bank Reconciliation	included	included
Business Insights	included	included
Business Intelligence - 1 RM License	included	included
Credit Card Processing - by SPS	included	included
Crystal Reports Designer (2 licenses)	included	included
Custom Office	included	included
General Ledger	included	included
Library Master	included	included
Paperless Office	included	included
Sage CRM Server & 1 Concurrent user	included	included
Visual Integrator	included	included
Bill of Materials	n/a	included
Inventory Management	n/a	included
Purchase Order	n/a	included
Return Merchandise Authorization	n/a	included
Sales Order	n/a	included
Sage Business Care - Gold Plan		
Product updates and enhancements	included	included
Version upgrades	included	included
Unlimited support via phone, email, or chat	included	included
Unlimited access to the support Knowledgebase	included	included
Unlimited Sage Anytime Learning "Essentials" online training	included	included
20% off real-time training	included	included
\$200 discount on each Sage Summit conference registration	included	included

Sage 100 ERP Option Add-ons	Monthly Fee (includes Sage Business Care Gold Plan)
Core Accounting:	
Electronic Reporting	\$20
Business Intelligence:	
Report Manager (per user per month)	\$40
Report Viewer (per user per month)	\$10
Report Designer	\$40
Connector	\$80
Distribution:	
Bar Code	\$80
eBusiness:	
eBusiness Manager	\$110
.Order	\$35
.Store	\$35
.Inquiry	\$35
eBusiness Web Services	\$55
Fixed Assets:	
Sage Fixed Assets - Depreciation with Reporting, 1 user networked	\$90
Sage Fixed Assets Premier -Deprecation with Reporting, 1 user networked - for SQL Server	\$130
Manufacturing:	
Material Requirements Planning	\$80
Work Order	\$80
Payroll:	
Payroll (includes direct deposit and payroll tax updates)	\$50
Time & Project Management:	
Job Cost	\$60
Timecard	\$60
Sage Timesheets (minimum 25 users)	\$4
Crystal Reports:	
Crystal Reports Professional (single)	\$20

Course List

Course Title	Course Length	CPE Credits	Cost
Business Alerts	1 day	8	\$395
4.2 Customer Workshop GL or LM	1 day	8	395
4.2 Customer Workshop SO & AR	1 day	8	395
MAS 90/200 Core Applications	5 days	40	1,580
MAS 90/200 GL, AP, AR, or Payroll	1 day	8	395
Crystal Reports - Introduction	2 days	16	790
Crystal Reports - Beyond the Basics	2 days	16	850
Distribution	3 days	24	1,070
Inventory Management	1 day	8	395
Sales Order or Purchase Order	1 day	8	395
Return Merchandise Authorization	1 day	8	395
Manufacturing	3 1/3 days	28	1,265
Inventory Management	1 day	8	395
Bill of Materials or Work Order	1 day	8	395
Material Requirements Planning	½ day	4	250
MAS 90/200 Installation	2 days	16	1,080
MAS for SQL Installation	1 ½ days	12	600
SMI Intermediate or Advanced	1 day	8	395
FRx	2 days	16	790
Data File Structure	1 day	8	395
Technical Support	2 days	16	850
Job Cost	2 days	16	790
Visual Integrator	2 days	16	790
Customizer or Customizing Forms	1 day	8	395
Data Migrator	2 days	16	690
e-Business Manager	2 ½ days	19	1,000
BusinessWorks Core	4 days	32	1,175
BW System Manager or GL	½ day	4	200
BW A/P, A/R, Payroll, Order Entry,			
Inventory Control or Job Cost	1 day	8	345
BusinessWorks: Crystal Reports	2 days	16	690
FAS Intermediate	2 days	16	1,100
Abra Human Resources or Payroll	3 days	24	1,320
Abra Crystal Report Writer (HR or PR)	1 day	8	690
Abra Payroll Year End (Lecture)	1 day	8	575
Dynamics GP Financial Series	5 days	40	1980
Dynamics GP Foundations	1 day	8	495
Dynamics GP General Ledger	1 day	8	495
Dynamics GP Payables Management	1 day	8	495
Dynamics GP Receivable Management	1 day	8	495
Dynamics GP Fixed Assets	1 day	8	495
Dynamics GP Bank Reconciliation	1/2 day	8	250
Dynamics GP Supply Chain Series	3 days	4	1188
Dynamics GP Inventory Control	1 day	24	495
Dynamics GP Purchase Order Processing	1 day	8	495
Dynamics GP Sales Order Processing	1 day	8	495
Dynamics CRM Sales Management	1 day	8	495
Dynamics CRM Marketing Automation	1 day	8	495

To register for Sage classes, please visit
<http://www.sagesoftwareuniversity.com>

To register for Microsoft classes please fill out the registration form and fax it to 513-772-4529 or call Mary at 513-772-7284 x118

Class Spotlight

Dynamics CRM Sales Management:

This one-day course explores the Microsoft Dynamics CRM application from the user's perspective. Application functionality covered in the course includes Core CRM Navigation, User Interface, Outlook Client, and the Sales Management module.

This course teaches the process and functionality used by sales managers and sales representatives. This course begins with an introduction to the core concepts of Microsoft Dynamics CRM then an overview of the sales processes. Subsequent lessons explore the sales concept in greater detail. A thorough understanding of the sales process in Microsoft Dynamics CRM helps you to get the most out of your system.

Dynamics CRM Marketing Automation:

This one-day course explores Microsoft Dynamics CRM application for a user's perspective. Application functionality covered in this course includes Core CRM Navigation, User Interface, Outlook Client, and Marketing Automation module. This course teaches the processes and functionality used by the marketing managers and marketing representatives. It begins with an introduction to the core concept of Microsoft Dynamics CRM and then an overview of the marketing automation processes. Subsequent lessons explore the marketing concepts in greater detail. A thorough understanding of the marketing processes in Microsoft Dynamics CRM helps you to get the most out of your system.

Microsoft Classes Registration

Event/Class Choice _____

Class Date _____

Name _____

Company _____

Address _____

City _____

State and Zip _____

Office Number _____

Fax Number _____

E-mail address _____

*Credit Card # _____

Expiration Date _____

Cardholder Name _____

** To register for Sage courses, please visit
<http://www.sagesoftwareuniversity.com>

In case of cancellation, participants must notify the training center at least two weeks prior to the class in order to avoid loss of full tuition.



Events and Training Schedule May 2012 through August 2012

May

Monday	Tuesday	Wednesday	Thursday	Friday
	1	2 Customizer	3 BusinessWorks - Inventory Control	4 BusinessWorks - Order Entry
7 MAS Core - Intro and Sys.Admin	8 MAS Core - Accounts Receivable	9 MAS Core - General Ledger	10 MAS Core - Accounts Payable	11 MAS Core - Payroll
14	15 Report Design in Dynamics	16 Report Design in Dynamics	17 MAS Job Cost	18 MAS Job Cost
21 Manufacturing - Inventory Mgmt	22 Manufacturing - Bill of Materials	23 Manufacturing - Work Order	24 Manufacturing - MRP	25
28	29	30	31	

June

Monday	Tuesday	Wednesday	Thursday	Friday
				1
4	5 GP Supply Chain - Inventory Control	6 GP Supply Chain - Purchase Order	7 GP Supply Chain - Sales Order FRx	8 FRx
11	12 BusinessWorks - Intro/Sys Admin	13 BusinessWorks - Accounts Payables/ Cash Management	14 BusinessWorks - Accounts Receivable	15 BusinessWorks - Payroll
18	19	20 Applications in Dynamics CRM	21 Applications in Dynamics CRM	22 Applications in Dynamics CRM
24	25	26	27 e-Business Manager	28

July

Monday	Tuesday	Wednesday	Thursday	Friday
2	3	4	5	6
9 Dynamics GP - Foundations	10 Dynamics GP - General Ledger SMI Intro	11 Dynamics GP - Payables Mgmt SMI Advanced	12 Dynamics GP - Receivables Mgmt	13 Dynamics GP - Fixed Assets BW Crystal Reports
16 MAS Data File Structures	17 Crystal Reports Intro MAS Tech Support	18 Crystal Reports Intro MAS Tech Support	19 Crystal Reports Beyond the Basics	20 Crystal Reports Beyond the Basics
23 MAS Distribution - IM	24 MAS Distribution - SO	25 MAS Distribution - PO	26 MAS - RMA	27
30	31			

August

Monday	Tuesday	Wednesday	Thursday	Friday
		1 BusinessWorks - Inventory Control	2 BusinessWorks - Order Entry	3
6	7	8	9 Job Cost MS Management Reporter	10 Job Cost MS Management Reporter
13	14	15	16	17
20 MAS Core - Intro and Sys.Admin	21 MAS Core - Accounts Receivable	22 MAS Core - General Ledger	23 MAS Core - Accounts Payable	24 MAS Core - Payroll
27	28 Customizer MAS - Inventory Management	29 Visual Integrator MAS - Bill of Materials	30 Visual Integrator MAS - Work Order	31 BusinessWorks - Job Cost MAS - MRP

Let Martin and Associates assist you with all of your training needs. Martin and Associates is constantly receiving positive evaluations and we continuously hear how "friendly, helpful and hospitable" we are. Martin and Associates not only wants each student to have a positive learning experience but also to have fun and enjoy class with their fellow students. We are one of the few training centers that offer a complimentary continental breakfast, as well as, lunch at a local restaurant.

Martin and Associates has been training and working with resellers since 1988 and became a Sage Authorized Training Center (ATC) in 1997. Starting with one training room and three trainers, we have grown to three training rooms and thirteen trainers. Our thirteen certified trainers are consulting specialists when they are not teaching; therefore, they are able to bring real world situations to the classroom.

Martin and Associates always uses Sage certified course curriculum and all of our courses include hands-on demonstrations, interactive sessions, reviews, and lab exercises. We guarantee your satisfaction!

Save the Date

**Microsoft Lunch & Learn
May 23, 2012**

**Summer Lunch & Learn
June 15, 2012**

For more information, please visit
<http://www.martinandassoc.com/events/upcoming>



Information Matters



Product	SLP	Annual Maintenance
Electronic Banking Suite		
ACH Complete - Accounts Payable, Accounts Receivable, Sales Order & Payroll Bundle	2,995.00	1,000.00
ACH Complete - Accounts Payable, Accounts Receivable & Sales Order Bundle	2,595.00	865.00
ACH Complete - Accounts Receivable & Sales Order Bundle	1,795.00	600.00
ACH Complete - Accounts Payable & Accounts Receivable Bundle	2,095.00	700.00
ACH Complete - Accounts Payable & Sales Order Bundle	2,095.00	700.00
ACH Complete for Accounts Payable	1,295.00	430.00
ACH Complete for Accounts Receivable	1,295.00	430.00
ACH Complete for Sales Order	1,295.00	430.00
ACH Complete for Payroll	695.00	230.00
Positive Pay - Accounts Payable & Payroll	1,095.00	365.00
Positive Pay - Accounts Payable	795.00	265.00
Positive Pay - Payroll	795.00	265.00
BankRec Clear	795.00	265.00
BankRec Clear and Positive Pay Accounts Payable	1,350.00	450.00
BankRec Clear and Positive Pay Payroll	1,350.00	450.00
BankRec Clear and Positive Pay Accounts Payable & Payroll	1,500.00	500.00
Sales Tax Management		
Sales Tax Management Bundle	1,795.00	599.00
Sales Tax Management - Accounts Payable & Purchase Order	1,195.00	398.00
Sales Tax Management - Accounts Receivable & Sales Order	1,195.00	398.00
Sales Tax Management - e-Business Manager	495.00	165.00
White Paper		
White Paper Suite	598.00	358.00
White Paper W2	390.00	238.00
White Paper 1099	240.00	144.00
Other		
Payroll Additional Pay Rates	795.00	265.00
Customer Sales/ Vendor Purchase History Recalculation	765.00	N/A
Magnetic Media - State Quarterly Unemployment Reporting	1,295.00	430.00
Magnetic Media - State W2 Electronic Media Reporting	1,095.00	365.00